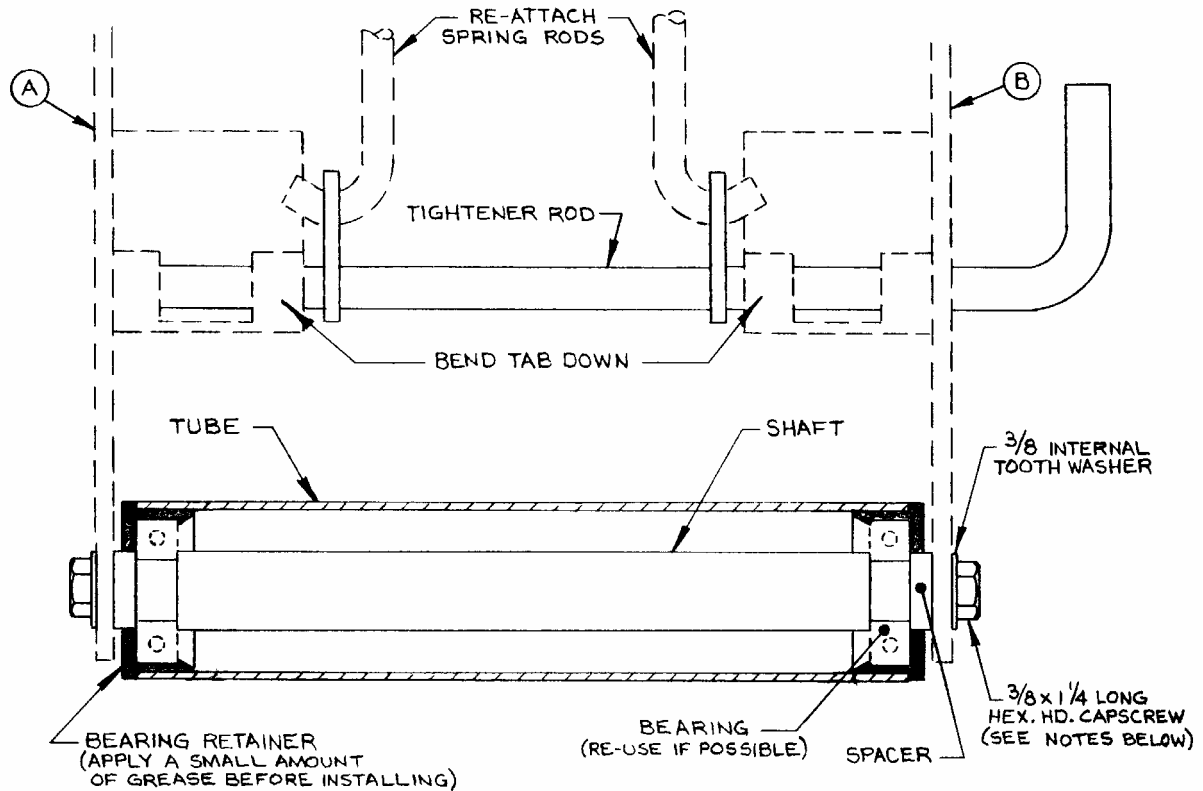


IDLER ROLLER REPAIR KIT INSTALLATION INSTRUCTIONS

Assemble new idler roller as shown. (Existing parts being re-used are shown dotted.)



NOTES:

1. Capscrews and internal thread of shaft must be free of oil.
2. Use two drops of Loctite "Threadlocker 242" or equivalent on capscrews.
3. Ensure bar weldments (A) and (B) line up when hardware is tightened.